



DESIGN BUILD | GENERAL CONTRACTING | CONSTRUCTION MANAGEMENT

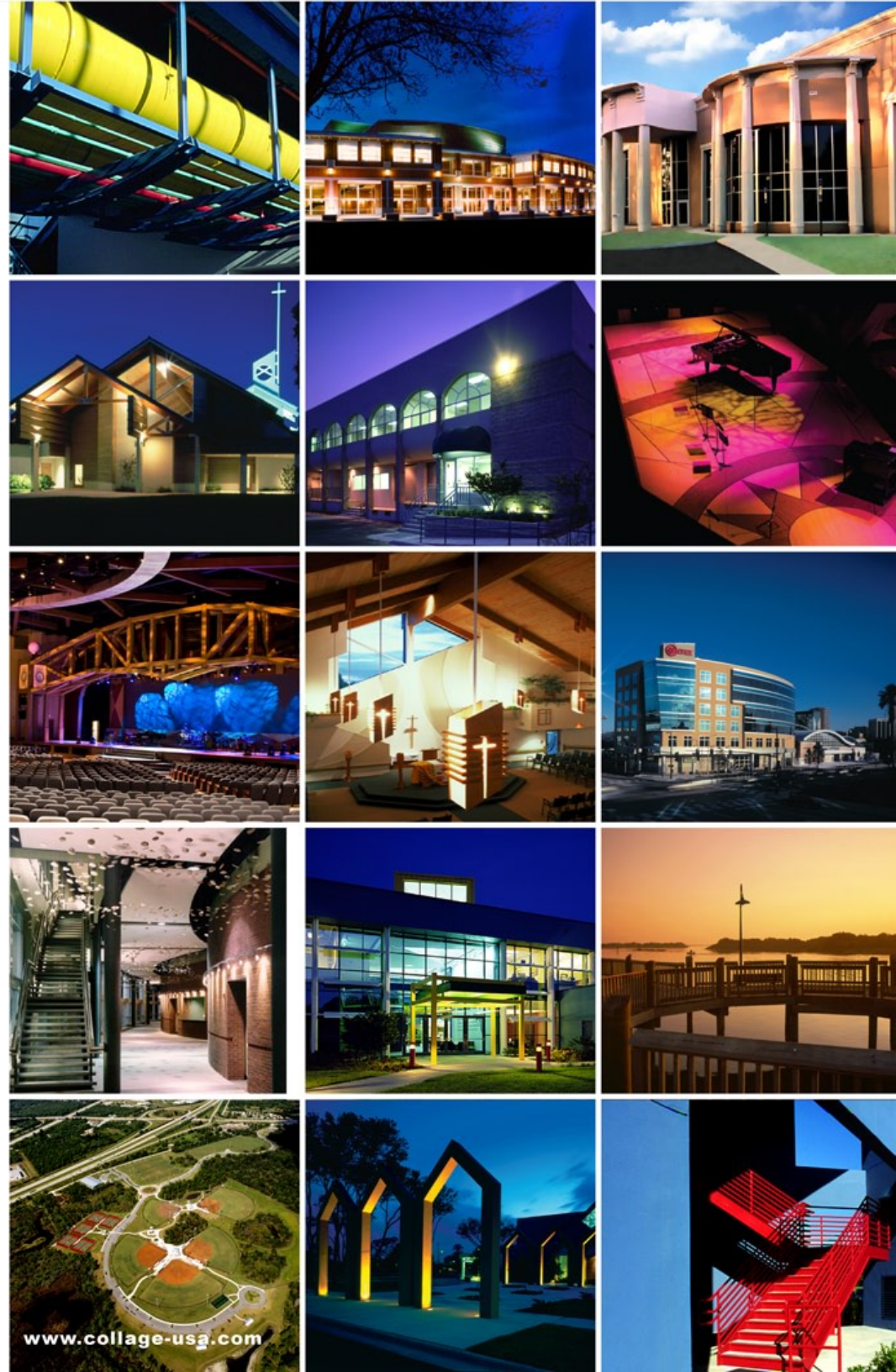
Proven People. Proven Performance
BUILDING MORE THAN BUILDINGS
www.collage-usa.com

corporate profile

COLLAGE (ko-lazh) -n. 1. the art of integration. 2. the work of integrating distinct yet related disciplines to achieve a unified whole.

Since 1982 The Collage Companies has served a multitude of satisfied clients; most of them repeat clients. Today The Collage Companies remains a leader in 'turn-key' design build projects. The management team has compiled hundreds of years of construction experience and makes it a point to stay involved with each project. As a leader in construction technology, The Collage Companies has won numerous awards for building excellence having completed hundreds of projects for the Federal and local governments, large and small corporations, schools and churches on time and on budget. For projects of any size, The Collage Companies is experienced in finance, design assistance and construction. It is true that The Collage Companies has a passion for trust that few companies understand, but when clients see the results it all becomes clear. We are building more than buildings, we are carrying out a promise.

The Collage Companies realizes that a key element to success is people; people who bring technical expertise, the ability to listen, the ability to communicate, and the ability to integrate and to manage. The team at Collage has these qualities and is second to none in its experience, capabilities and desire to achieve success and lead the way in meeting our mission which is: *To build projects that strengthen the foundation and fabric of our community.*



corporate profile

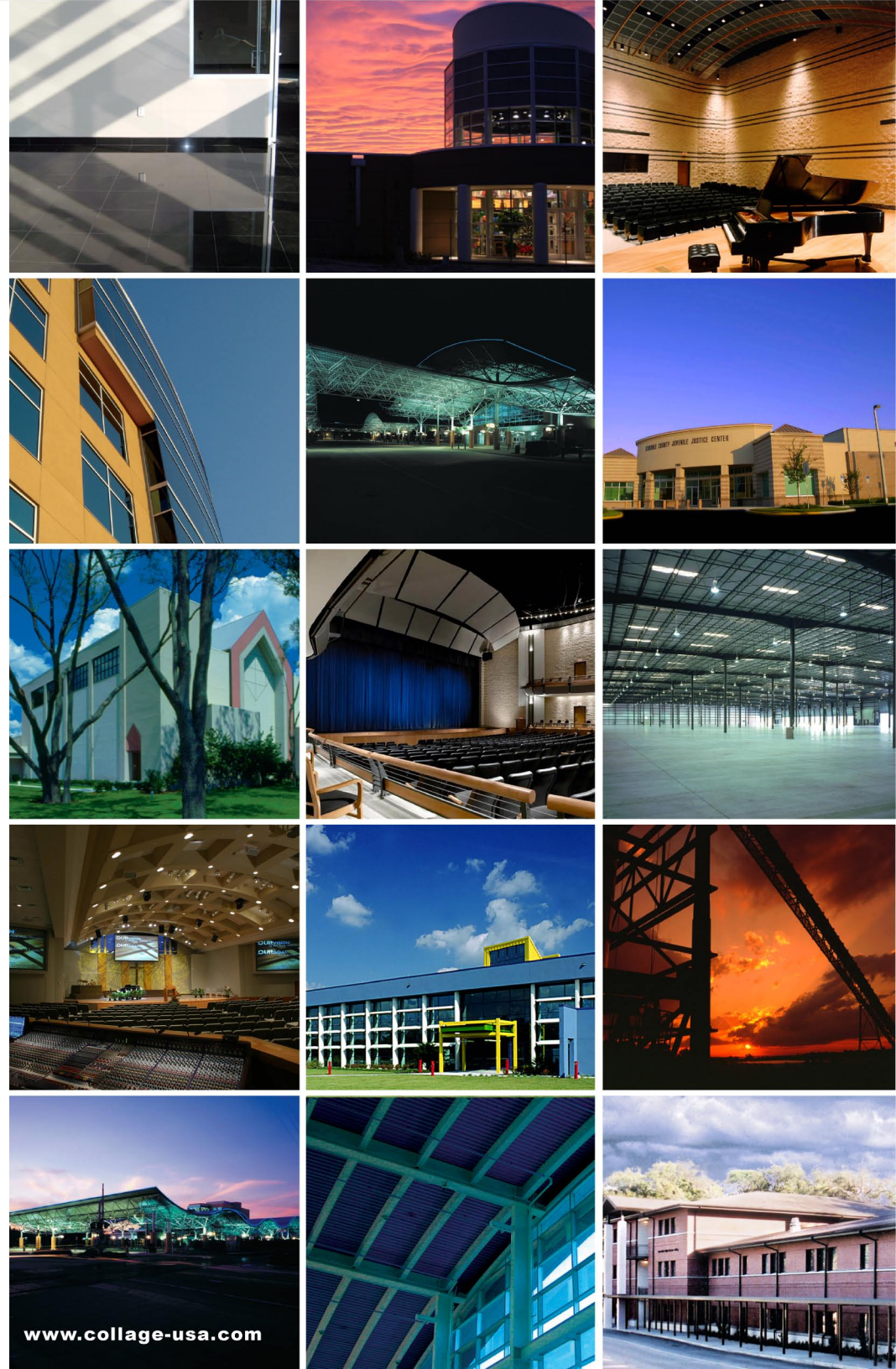
construction management delivery

The Collage Companies has many years of experience in each of the delivery methods used in our industry to meet the needs of our clients: *General Contracting, Construction Management, Design Build.*

In addition Collage has a team of professionals that are skilled and experienced to provide professional or consulting services in the areas of; *Owners Representation, Cost Estimating / Evaluation, Real Estate Development.*

construction management approach

A very specific advantage to the Collage approach to a project is the clear understanding of the need to track dollars. We understand the responsibility of being a trustee of your budget. Another benefit of the Collage program is seeing the big picture and having a long term perspective on cost. We consider construction cost and operational cost. We understand that the real dollars of a project can only be saved during the design phase by efficient design and effective planning. Attention to detail when it comes to the designing, systems evaluation, scheduling, manpower projections along with long lead time coordination is where maximum dollars are saved. The integration of Collage/CM Services during the design and pre-construction process as well as throughout the entire project duration assure the greatest potential for achieving the project goals and overall success.



corporate profile

construction management services

As you review our approach for the construction management of your new facility please note that our team of experienced professionals maintains a very simple philosophy and follows a specific set of objectives to meet your goals. *We will Listen, Evaluate Programs, Analyze Options, Provide Solutions, Systems, and Seamless Project Execution.*

Our COLLAGE/CM system is divided into three clear phases of the construction process: Pre-Construction Services, Construction Services, Post-Construction Services

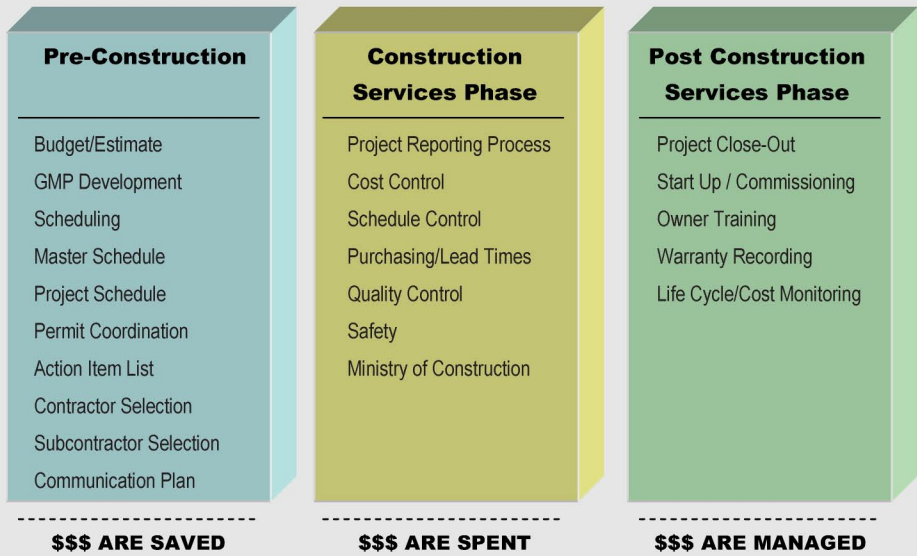
A signature element of the COLLAGE/CM approach is good stewardship. Since we understand that the real dollars of the project can only be saved during the design phase by efficient design, we integrate closely with the Owner and the Design Team. Attention to detail when it comes to the planning and the massing of the building along with selection of the best products (best value regarding durability as well as aesthetics) and analysis of a life cycle cost model is where the maximum dollars are saved now and in the future. The integration of COLLAGE/CM Services during the design/pre-construction and throughout the entire project duration assures the maximum potential for Excellent Architecture and Good Stewardship. Each of these services is again divided into very clear tasks in order to best monitor and manage your project.

Advantages of COLLAGE/CM SERVICES

With COLLAGE as Builder or Advisor

The COLLAGE philosophy for delivering a successful project is quite simple: *Excellent Architecture and Good Stewardship.*

The crux of our belief is that these two elements should never be separated. COLLAGE/CM was developed as part of THE COLLAGE COMPANIES Services to ensure the integration with the Owner and the Design Team for the most secure avenue to achieve the goals on any size project.



market perspectives

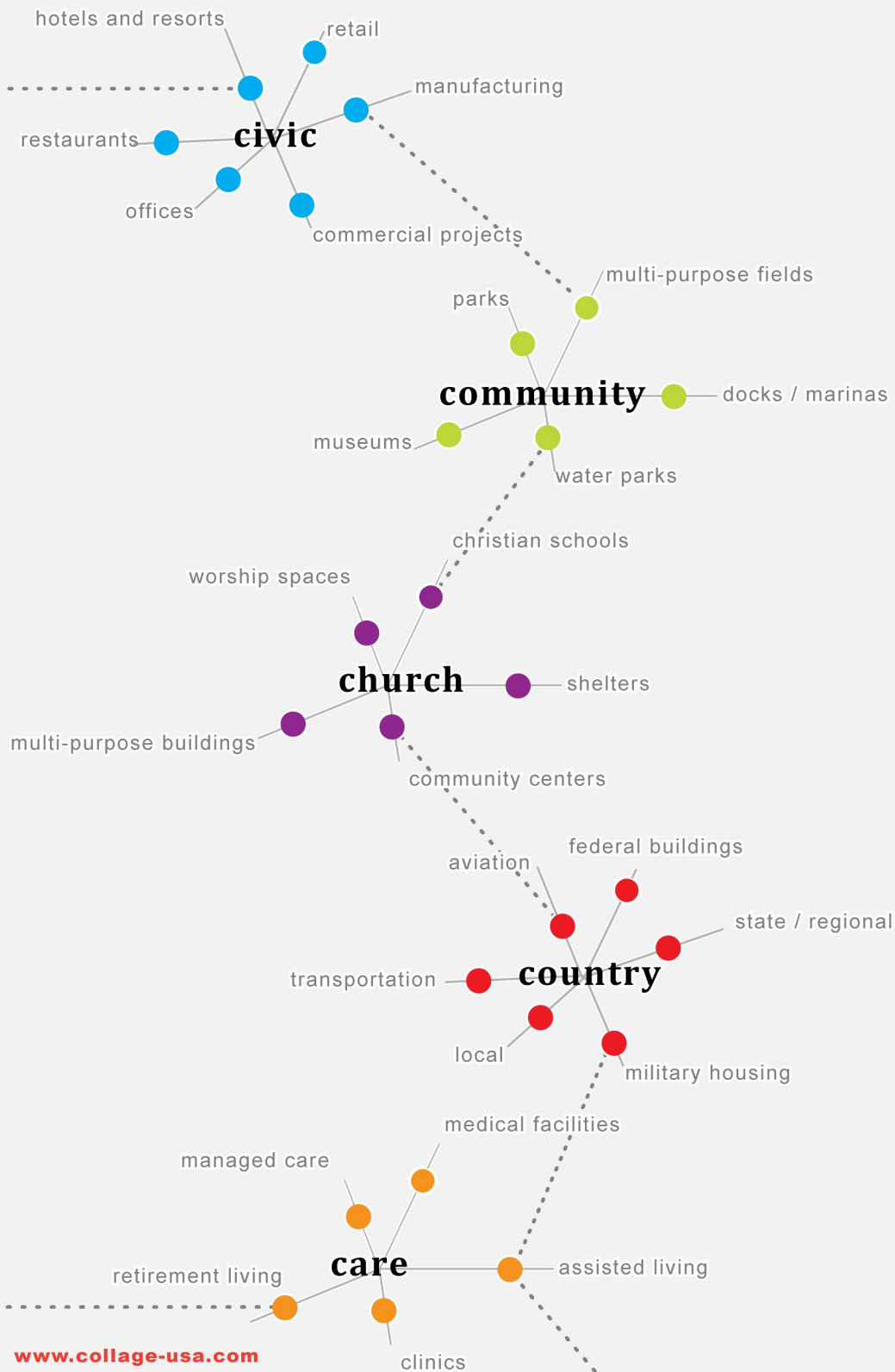
Every company has to have a purpose. You can call that purpose a mission which, at The Collage Companies, we do. Our mission is to build projects that strengthen the foundation and fabric of our community. As with many mission statements that sound good the question then becomes what does that mean and how do we do it.

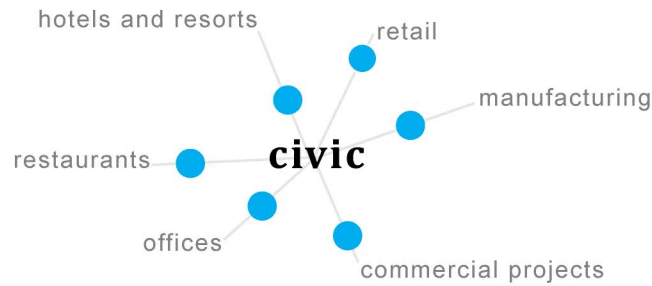
For The Collage Companies this purpose becomes very clear as we look at the world in which we live and see what we can do to make it better, or more accurately, what we can do to help our clients make it better. We don't make a product to sell. We are a service company. Our goal is to provide excellent service.

We look to provide excellent service in particular sectors, or markets, of our industry. They may not have the typical names that our industry uses but we don't view what we do as typical. In a sense these sectors are what we see as the pillars of our society (or as we call it the foundation and fabric). This is what we call our market perspective or the world as we see it and how we can help.

Those markets are:

CIVIC, COMMUNITY, CHURCH, COUNTRY and CARE.



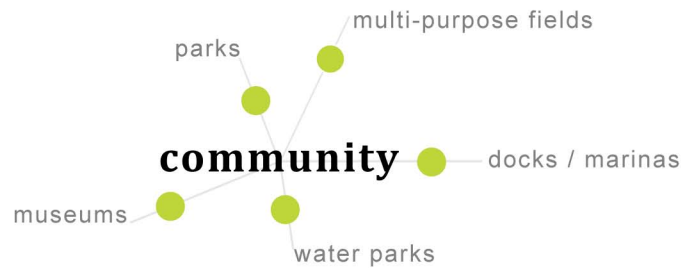


spaces belonging to the city or marketplace

Collage seeks quality and professionalism on all of our projects and has a list of hundreds of projects and satisfied clients. Great projects are achieved by working in partnership with owners, architects, engineers, subcontractors and suppliers. Regardless of what delivery method you choose: Design Build, General Contracting or Construction Management. Collage has extensive experience to lead the construction team and assure success.

Each delivery method has its own advantages for your particular project and our team will listen first and then integrate into the team to bring leadership, proven accountability and success. We know the needs of your industry are unique and we know your project has specific requirements. We intend to meet them both. At Collage we desire to become a valued member of your team and an integral part of your projects' success. *We will do whatever it takes to make that happen.*

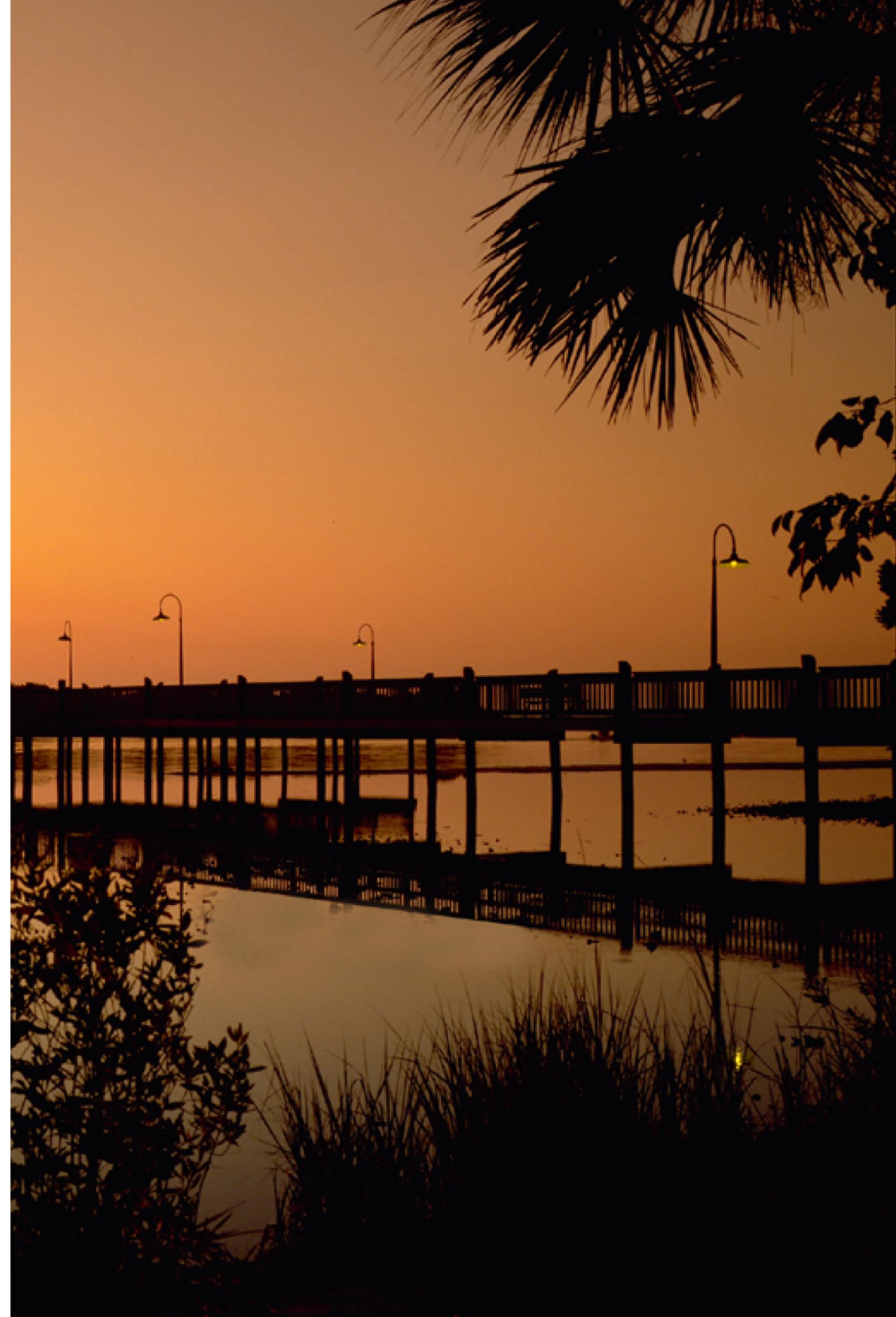


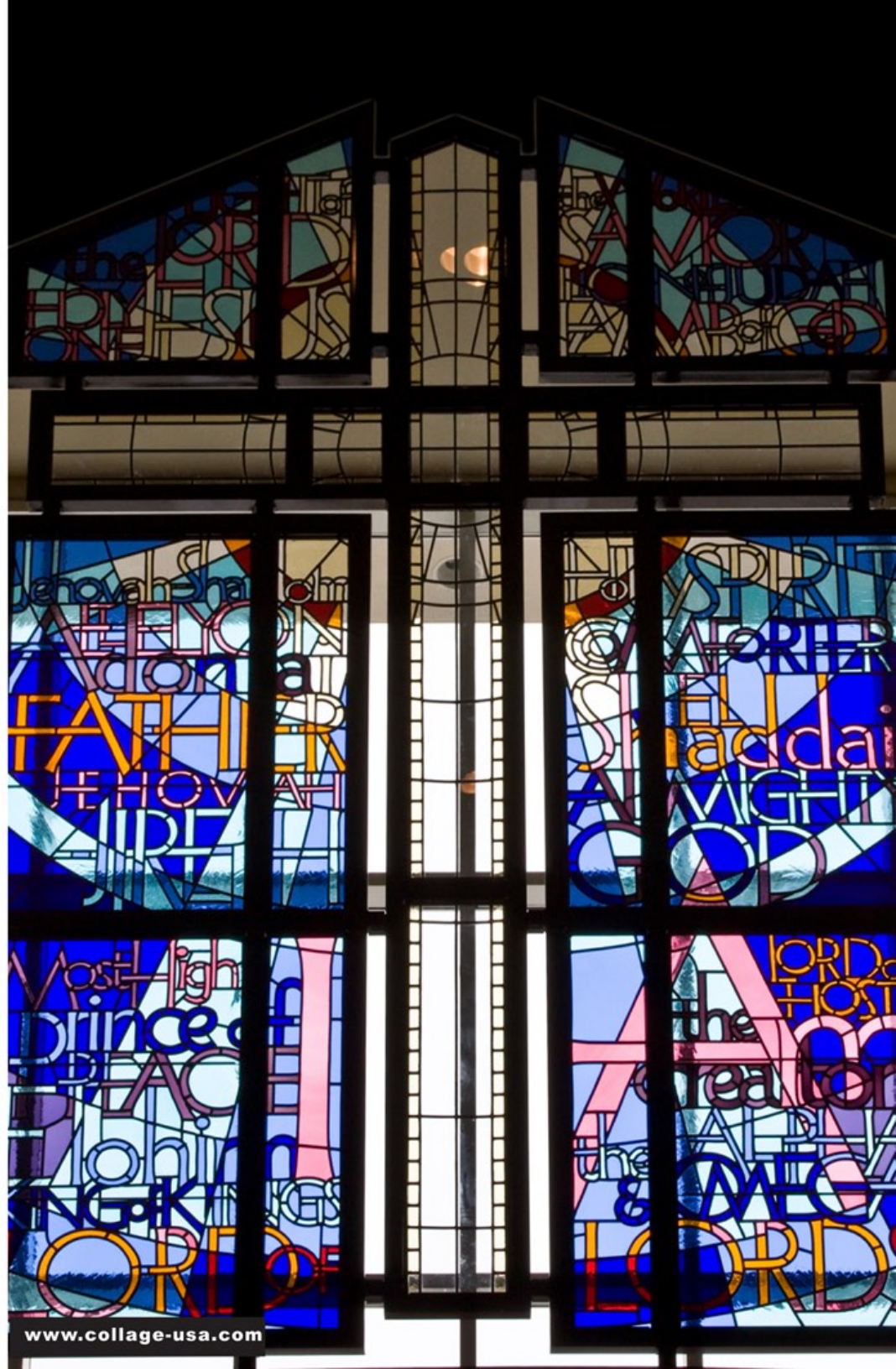


a common place for common purpose

Since Collage was founded, it has focused on building more than-buildings. From day one we built our reputation on an uncompromising commitment to quality, competitive and value-driven pricing, clear, concise and honest communication and a philosophy that keeps growing relationships even when the project is complete. Today, with each new project and each new relationship, we build on that same stable foundation.

When it comes to building community projects such as parks and recreational facilities we have a proven track record and are considered a leader in the marketplace. We know the sources, products and amenities that will work for your project. We have the required knowledge and sensitivity to environmental issues. From projects that range from the development of urban green space to hundred acre regional parks, we want to work with you to make our world "greener" with more trees and grass and open spaces; *to make the communities in which we live and work better.*

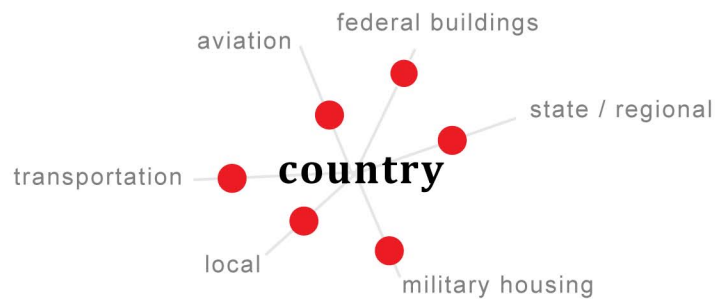




www.collage-usa.com

1

In no other area of construction does Collage better exhibit its' commitment to excellence, to quality, to stewardship and to the community, than in church construction. *God has a vision for your Church. Our vision is to help you build it.*

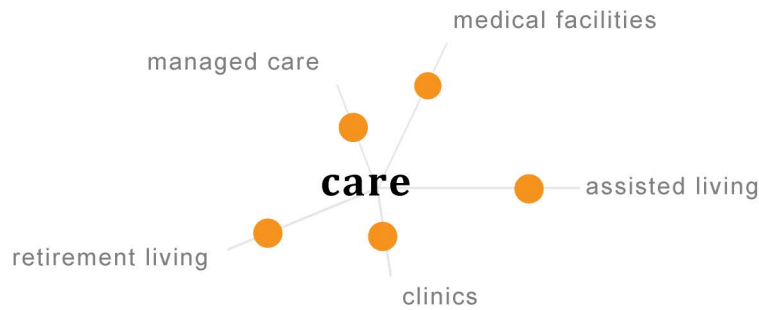


facilities for the growth and protection of our nation

Constructing government projects requires a dedication and a commitment equal to that of the people who will use the facilities and those men and women that serve our nation. The Collage Companies team respects and understands that commitment. We are familiar with the increased levels of integrity and security required to work on government properties and installations.

Collage understands and supports government procurement and has strong alliances with 8a, Hubzone and Service Disabled Veteran Firms. SMC/COLLAGE is our Service Disabled Company the provides services for specific federal projects. Please refer to **www.collage-usa.com/smc**. Collage has built our reputation on an uncompromising commitment to meeting our clients requirements and program needs as well as competitive, value-driven pricing and clear, concise communication. Our commitment and attention to detail is evident in every government contract that we perform. *Our commitment to country is clear and our pride in what we do is seen in the quality and the results.*





places that care for people who we care for

Health care construction is one of largest and fastest growing sectors of construction today. The aging of our population coupled with the growing emphasis on preventative and alternative health care will only increase this footprint.

"America has the best doctors, the best nurses, the best hospitals, the best medical technology and the best medical breakthrough medicines in the world. There is absolutely no reason we should not have the best health care (and health care facilities) in the world." Bill Frist M.D., physician, businessman, and U.S. Senator.

Collage has taken on the challenge to bring the multitude of resources and years of experience that we have to meet the needs of our clients, not only today, but in the future for the complex and ever changing world of medicine, clean rooms, operating rooms, etc. that require unequalled quality and unwavering standards. *Years of experience have proven that not only do we care how we build; we care.*



we welcome the opportunity for our words and our references to be examined.

“Your cooperation, courtesy, and efficiency of operation were essential ingredients in making the building a reality. The attention given by Collage to the University, the needs of the Downtown Center, and the community it is mandated to serve has been outstanding.”

Dr. Thomas A. Shostak, Associate Vice President/Director
University of Central Florida

“Your team had the desire and ability to work through the challenges that are inevitable on a project of this size. This spirit of cooperation allowed us to address challenges that were brought by all members of the team and still move forward to completion.

Owasu Amani
Northland, A Church Distributed

“We are delighted with the professionalism and quality of work provided by your company. We also appreciate the teamwork that took place between Collage, the Architect and the Construction Manager”.

Linda Watson, Executive Director
Lynx / Central Florida Transportation Authority

“Collage assisted the architect in value engineering which resulted in a substantial saving to the estimated building costs. The building process went smoothly and Collage performed in an exemplary manner.”

William L. Colbert, Building Committee Chairman
First Baptist Church of Sanford

**HQ The Collage Companies Construction | 585 Technology Park
Lake Mary, Florida 32746 | P 407.829.2257 | F 407.829.2258
HEADQUARTERS: FLORIDA | SERVING OUR CLIENTS AT THEIR POINT OF NEED**

www.collage-usa.com

THE MOST INFORMED CONSTRUCTION SERVICES COMPANY™

Aaron Scrap Metals
Acme Improvement District
Addison Weather King
All Nippon Airways
AmeriFirst Federal Savings & Loan
Amerisulites
Ariaba Margarita
Avis
BRC Properties, Inc.
Bailey, Cooper & Company, CPA
Bayhead Eye Center
BellSouth Mobility, Inc.
Bethune-Cookman College
Bob Carr Auditorium
Bose/Michejda Architects
Brantiff Airlines
Budget Rent-a-Car
Burger King Restaurants
Burke, Bales & Mills, Inc.
Calvary Assembly
Casselberry Pediatrics
Catalyst, Inc.
Catholic Diocese of Orlando
Central Florida Transportation Authority
Cheers
Chili's Restaurant
Church in the Son
Cincinnati Bell Information Systems (CBIS)
City of Altamonte Springs
City of Lake Mary
City of Lake Mary Public Safety/Works Complex
City of Mount Dora
City of New Smyrna Beach
City of Orlando
City of Port St. Lucie
City of Winter Park

Continental Airlines
Conway United Methodist Church
Country Inn & Suites
Darden Restaurants
Daytona Beach Community College
Delta Airlines
Deltona Presbyterian Church
Department of Environmental Protection
Department of Management Services
Design Associates, Inc.
Dobb's In-Flight Catering
Dollar Rent-A-Car
Dr. Beim Medical Offices
Dr. Thomas Walsh Medical Offices
Dunkin Donuts
Duty Free International, Inc.
Dyer Boulevard Regional Park
Dyer, Riddle, Mills & Precourt, Inc.
Eisman & Russo, Inc.
Epoch Properties
Fairwinds Racquetball
Fashion Barn Stores
Fat Boy's Bar-B-Que
First Baptist Church of Sanford
First Union National Bank of Florida
First Unitarian Church
Florida Department of Transportation
Florida Extruders International
Florida Municipal Power Agency
General Mills Restaurants, Inc.
General Services Administration
Gerken, Pierce & Smith
Gorman Foundation
Graphic Impressions
Greater Orlando Aviation Authority
GRG Office Building
Gulliani Associates
Hammermill Paper Company
Hanson, Taylor, Bellomo & Herbert
Hertz
Hontoon Island State Park
Host Marriott Services Corporation
Idea, Inc.
KBJ Architects
Kellogg Properties, Inc.
Kelly Custom Parts
Kenneth A. Bragg Public Safety Complex
Key's Gift Shop at OIA
L.S. McInnis Elementary School
La Quinta Inns, Inc.
Lake County School Board

Lake County School Board
Lake Howell Elementary
Lake Mary Centre Medical Offices
Little Caesar's
Lutheran Ministry in Christ
Lynx Central Station
Madison
Maguire, Voorhis & Wells, P.a.
Mariner's Bay Clubhouse
Marriott International
Miami Duty-Free Enterprises, Inc.
Mock, Roos & Associates, Inc.
Mt. Carmel Family Life Center
Nannie Cahoon House
Natural Energy Unlimited, Inc.
Navy Orlando Federal Credit Union
Nick Jones & Associates, Inc.
Northland, A Church Distributed
O'Brothers Pub & Restaurant
OLD, Inc.
Orangewood Christian Church & School
Orange County School Board
Orlando Duty Free Stores
Orlando International Airport
Orlando Landmarks Defense, Inc.
Owen Bailey, CPA
Palm Beach County
Peabody Shops
Piedmont Airlines
Pierson Community Park
Plaza North Office Building
Post, Buckley, Schuh & Jernigan, Inc.
Prince of Peace Lutheran Church
Miller Architecture
Redeemer Lutheran Church
Resurrection Catholic Church

Reynolds, Smith & Hills, Inc.
Rich Swisher, Architect
River Breeze Park
Riverside Park
Robert A. Harris Architect
Savannah International Airport
Schenkel Schultz
Schweizer, Inc.
Scotty's, Inc.
Seminole County
Seminole County School Board
Seminole County Juvenile Justice Center
Shader Industrial Warehouse
Shells Restaurant
S.J.L. Management
Slater-Pauli & Associates
Solid Waste Authority
St. Augustine High School
St. Peter's Episcopal Church
Starbucks Coffee Shop
State of Florida Board of Regents
Strang Communications, Inc.
Strollo Architects, Inc.
SunBank, N.A.
Sun Physical Therapy
Taylor-McVay, Inc.
Texaco
The Atlantic SE District Church of the Brethren
The County of Volusia
The Key's Group
The Village of Wellington
Thrifty Rent-A-Car
Timothy G. Pleger, AIA
Tomoka State Park
Tucker State Bank
Tune-Up Clinic
Tuneco, Inc.
Tusawilla Animal Hospital
U.S. Customs
U.S. Federal Courthouse
UCF Downtown Academic Center
UCF Financial Aid & Humanities
UCF Health Education Facility
United Airlines
United Parcel Services (UPS)
Universal Studios, Florida
University of North Florida Fine Arts
University of Central Florida
US Air
Volusia County Parks and Recreation Services
Volusia County School Board



YOU HAVE OUR WORD. AND THEIRS